

CATALOG NUMBER BOX 100	ITEM NUMBER BOX 100	CATALOG NUMBER BOX 20	ITEM NUMBER BOX 20	FIG. NO.	STUD SIZE	COPPER CONDUCTOR ACCOMODATED	HEAT SHRINK CONNECTOR TYPE	DIMENSIONS						WIRE STRIP LENGTH
								B±.03	C±.03	K DIA±.04	L±.04	N±.04	TONGUE THICKNESS	
YHSS18	10094979	YHSS18RK	10095007	1	----	22AWG-18AWG	BUTT SPLICE	.25 [6]	----	----	1.50 [38]	----	----	5/16"
YHSS14	10094980	YHSS14RK	10095008	1	----	16AWG-14AWG	BUTT SPLICE	.25 [6]	----	----	1.50 [38]	----	----	5/16"
YHSS10	10094981	YHSS10RK	10095009	1	----	12AWG-10AWG	BUTT SPLICE	.25 [6]	----	----	1.60 [41]	----	----	5/16"
YHSA18K6	10094982	YHSA18K6RK	10095010	2	#6	22AWG-18AWG	RING TONGUE TERMINAL	.22 [6]	.29 [7]	.14 [4]	1.18 [30]	.14 [4]	.03 [1] REF	5/16"
YHSA18K8	10094983	YHSA18K8RK	10095011	2	#8	22AWG-18AWG	RING TONGUE TERMINAL	.22 [6]	.32 [8]	.17 [4]	1.18 [30]	.17 [4]	.03 [1] REF	5/16"
YHSA18K10	10094984	YHSA18K10RK	10095012	2	#10	22AWG-18AWG	RING TONGUE TERMINAL	.22 [6]	.32 [8]	.20 [4]	1.18 [30]	.33 [8]	.03 [1] REF	5/16"
YHSA18K14	10094985	YHSA18K14RK	10095013	2	1/4	22AWG-18AWG	RING TONGUE TERMINAL	.22 [6]	.47 [12]	.27 [7]	1.40 [36]	.38 [10]	.03 [1] REF	5/16"
YHSA18K516	10099378	YHSA18K516RK	30008902	2	5/16	22AWG-18AWG	RING TONGUE TERMINAL	.22 [6]	.47 [12]	.33 [8]	1.40 [36]	.24 [6]	.03 [1] REF	5/16"
YHSA18K38	10094986	YHSA18K38RK	10095014	2	3/8	22AWG-18AWG	RING TONGUE TERMINAL	.22 [6]	.56 [14]	.40 [10]	1.45 [37]	.28 [7]	.03 [1] REF	5/16"
YHSA14K8	10094987	YHSA14K8RK	10095015	2	#8	16AWG-14AWG	RING TONGUE TERMINAL	.22 [6]	.32 [8]	.17 [4]	1.18 [30]	.16 [4]	.03 [1] REF	5/16"
YHSA14K10	10094988	YHSA14K10RK	10095016	2	#10	16AWG-14AWG	RING TONGUE TERMINAL	.22 [6]	.32 [8]	.20 [4]	1.18 [30]	.17 [4]	.03 [1] REF	5/16"
YHSA14K14	10094989	YHSA14K14RK	10095017	2	1/4	16AWG-14AWG	RING TONGUE TERMINAL	.22 [6]	.47 [12]	.26 [7]	1.40 [36]	.23 [6]	.03 [1] REF	5/16"
YHSA14K38	10094990	YHSA14K38RK	10095018	2	3/8	16AWG-14AWG	RING TONGUE TERMINAL	.22 [6]	.56 [14]	.40 [10]	1.45 [37]	.28 [7]	.03 [1] REF	5/16"
YHSA10K8	30006089	YHSA10K8RK	30006090	2	#6	12AWG-10AWG	RING TONGUE TERMINAL	.22 [6]	.29 [7]	.14 [4]	1.18 [30]	.14 [4]	.03 [1] REF	5/16"
YHSA10K10	10094991	YHSA10K10RK	10095019	2	#10	12AWG-10AWG	RING TONGUE TERMINAL	.22 [6]	.34 [9]	.20 [4]	1.15 [29]	.18 [5]	.04 [1] REF	5/16"
YHSA10K14	10094992	YHSA10K14RK	10095020	2	1/4	12AWG-10AWG	RING TONGUE TERMINAL	.22 [6]	.56 [14]	.26 [7]	1.45 [37]	.15 [4]	.04 [1] REF	5/16"
YHSA10K38	10094993	YHSA10K38RK	10095021	2	3/8	12AWG-10AWG	RING TONGUE TERMINAL	.22 [6]	.56 [14]	.40 [10]	1.45 [37]	.28 [7]	.04 [1] REF	5/16"
YHSA10K12	10094994	YHSA10K12RK	10095022	2	1/2	12AWG-10AWG	RING TONGUE TERMINAL	.22 [6]	.69 [18]	.53 [13]	1.69 [43]	.36 [9]	.04 [1] REF	5/16"
YHSA18K10F	10094995	YHSA18K10FRK	10095023	3	#10	22AWG-18AWG	SPADE TERMINAL	.22 [6]	.31 [8]	.20 [4]	1.18 [30]	.27 [7]	.03 [1] REF	5/16"
YHSA14K10F	10094996	YHSA14K10FRK	10095024	3	#10	16AWG-14AWG	SPADE TERMINAL	.22 [6]	.34 [9]	.21 [5]	1.17 [30]	.27 [7]	.03 [1] REF	5/16"
YHSA10K10F	10094997	YHSA10K10FRK	10095025	3	#10	12AWG-10AWG	SPADE TERMINAL	.22 [6]	.37 [9]	.21 [5]	1.16 [29]	.27 [7]	.04 [1] REF	5/16"
YHSQ18F25X03	10094998	YHSQ18F25X03RK	10095026	4	----	22AWG-18AWG	FEMALE QUICK DISCONNECT	.22 [6]	.30 [8]	----	1.27 [32]	----	----	5/16"
YHSQ18M25X03	10094999	YHSQ18M25X03RK	10095027	5	----	22AWG-18AWG	MALE QUICK DISCONNECT	.22 [6]	.25 [6]	----	1.25 [32]	----	----	5/16"
YHSQ14F25X03	10095000	YHSQ14F25X03RK	10095028	4	----	16AWG-14AWG	FEMALE QUICK DISCONNECT	.22 [6]	.30 [8]	----	1.27 [32]	----	----	5/16"
YHSQ14M25X03	10095001	YHSQ14M25X03RK	10095029	5	----	16AWG-14AWG	MALE QUICK DISCONNECT	.22 [6]	.25 [6]	----	1.25 [32]	----	----	5/16"
YHSQ10F25X03	10095002	YHSQ10F25X03RK	10095030	4	----	12AWG-10AWG	FEMALE QUICK DISCONNECT	.22 [6]	.30 [8]	----	1.27 [32]	----	----	5/16"
YHSQ10M25X03	10095003	YHSQ10M25X03RK	10095031	5	----	12AWG-10AWG	MALE QUICK DISCONNECT	.22 [6]	.25 [6]	----	1.19 [30]	----	----	5/16"
YHSFQ18F25X03	10095004	YHSFQ18F25X03RK	10095032	6	----	22AWG-18AWG	FULLY INSULATED FEMALE QUICK DISCONNECT	.22 [6]	.38 [10]	----	1.28 [33]	----	----	5/16"
YHSFQ14F25X03	10095005	YHSFQ14F25X03RK	10095033	6	----	16AWG-14AWG		.22 [6]	.38 [10]	----	1.28 [33]	----	----	5/16"
YHSFQ10F25X03	10095006	YHSFQ10F25X03RK	10095034	6	----	12AWG-10AWG		.22 [6]	.38 [10]	----	1.34 [34]	----	----	5/16"

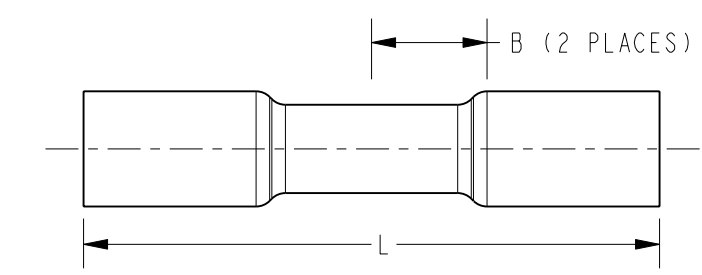


FIG. 1

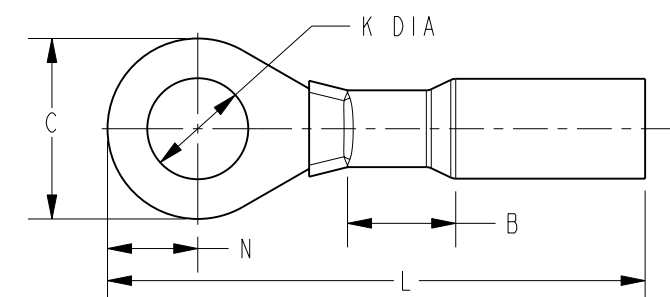


FIG. 2

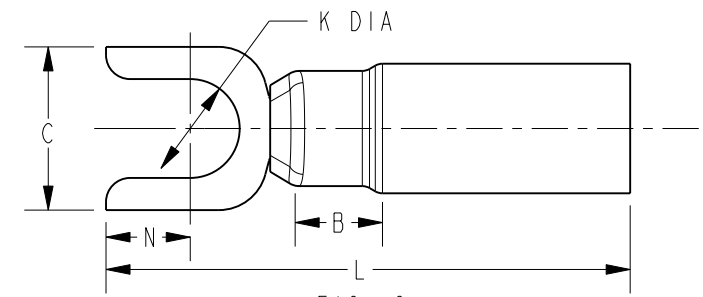


FIG. 3

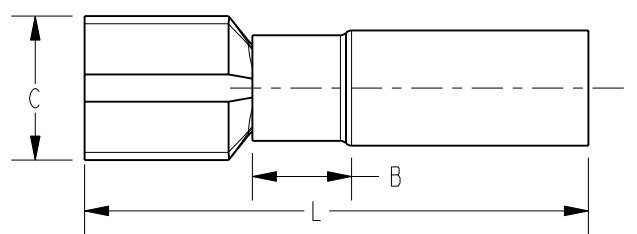


FIG. 4

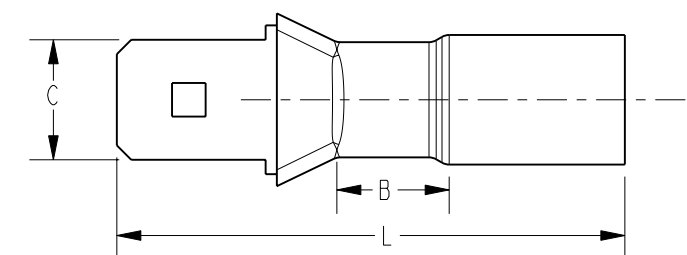


FIG. 5

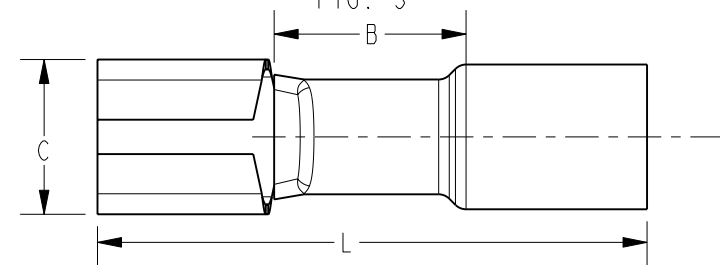


FIG. 6

NOTES:

1. MATERIAL: CONNECTOR-TIN PLATED COPPER, INSULATION-HEAT SHRINK
2. CRIMP ALL WITH MR22 (ITEM 10095172) RATCHETING TOOL AS SHOWN ON SHEET 2.
3. DIMENSIONS IN BRACKETS [] ARE IN MILLEMMETERS ROUNDED OFF TO THE NEAREST MILLEMMETER UNLESS OTHERWISE SPECIFIED, AND ARE FOR REFERENCE ONLY.

TO ORDER BURNDY PT		HEAT SHRINK CONNECTORS	
ITEM NO: SEE TABLE		CAT. NO: SEE TABLE	
DRAWN BY: A MONTMINY	01/16/2009		
CHECKER: J MICHAUD	01/23/2009		
DSN APPVL: J MICHAUD	01/26/2009		
MFG APPVL: R CAVANAUGH	01/26/2009		
QA APPVL: J BRODEUR	01/26/2009		
MKT APPVL: --	01/26/2009	SCALE: 2:1	
PROD FAM: --		DRAWING NO	REV
PROJECT #: EPI3856	SIZE	10095060	E
DOCUMENT TYPE: Sales	B	SHEET 1 OF 4	
REL LEVEL: Released			

REV: PE0200

REV.	DATE	DESCRIPTION	ECO	BY	C'H'K.
E	09/02/2013 00:00:00 AM	CAT.# YHSAT0K8 WAS ADDED IN TABLE FOR SHEET 1	32897	RG	BD



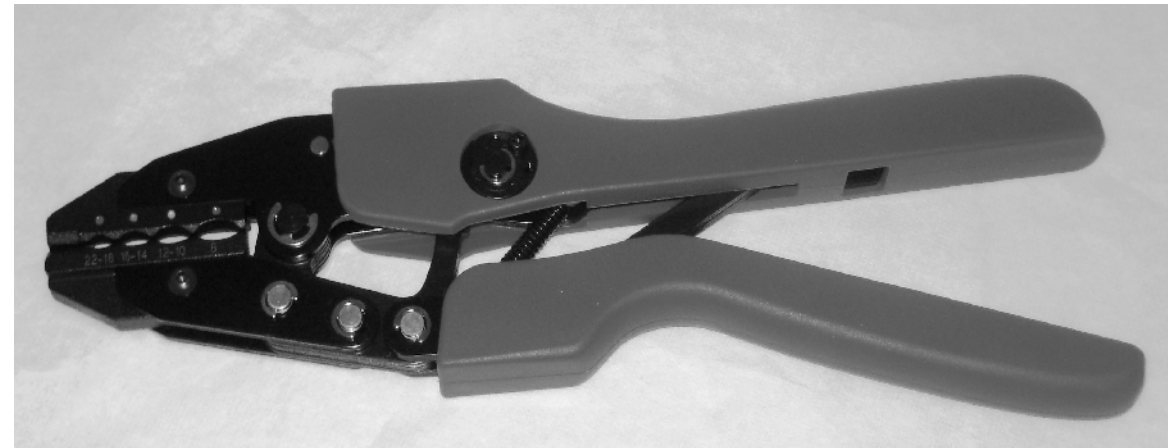
HEAT SHRINK KIT
CATALOG# HSKIT
ITEM NUMBER - 10095806

NOTES:
 1. THIS KIT CAN BE PURCHASED SEPARATELY. CONTENTS OF KIT AND QUANTITIES ARE SHOWN ON SHEETS 3 & 4.



HEAT SHRINK BUTANE TORCH
CATALOG# HSTORCH
ITEM NUMBER - 10095808

NOTE:
 1. INSTRUCTIONS FOR USE AND SAFETY ARE INCLUDED WITH THE BUTANE TORCH.






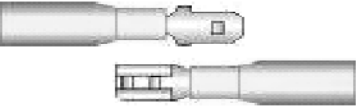














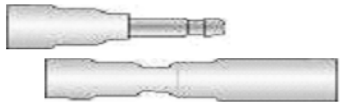

RATCHET CRIMPING TOOL
CATALOG# MR22
ITEM NUMBER - 10095172

NOTES:
 1. THIS TOOL IS FOR CRIMPING HEAT SHRINK TERMINALS ONLY. THE TOOL HAS 4 CRIMP NEST TO ACCOMMODATE: 8AWG, RED; 12-10 AWG, YELLOW; 16-14 AWG, BLUE; AND 22-18 AWG, RED.

REV: PE0200

TO ORDER BURNDY PT		HEAT SHRINK CONNECTORS	
ITEM NO: SEE TABLE		SCALE: 3:1	
CAT. NO: SEE TABLE		DRAWING NO	
DRAWN BY: A MONTMINY	01/16/2009	BURNDY	
CHECKER: J MICHAUD	01/23/2009		
DSN APPVL: J MICHAUD	01/26/2009		
MFG APPVL: R CAVANAUGH	01/26/2009		
QA APPVL: J BRODEUR	01/26/2009		
MKT APPVL: --	01/26/2009		
PROJECT #: EPI3856	SIZE	10095060	REV
DOCUMENT TYPE: Sales	B	SHEET 2 OF 4	E
REL LEVEL: Released			

SMALL HYDENT™ HEAT SHRINK TERMINAL KIT WITH RATCHET TOOL

YHSS18	YHSA 18K-6,8,10,516,14,38	YHSA 18K-.6F,8F,10F	YHSQ18M ,YHSQ18F25X03	YHSFQ18M /18F-25X03	High Quality Ratchet Crimp Tool
					
22-18 Butt	22-18 #6, 8, 10, 5/16, 1/4 & 3/8 Rings	22-18 #6, 8 & 10 Spade	22-18 .250 Male & Female	22-18 .250 Male & Female Fully Insulated	
YHSS14	YHSA 14K-6,8,10,516,14,38	YHSA 14K-.6F,8F,10F	YHSQ14M ,YHSQ14F25X03	YHSFQ14M /14F-25X03	
					
16-14 Butt	16-14 #6, 8, 10, 5/16, 1/4 & 3/8 Rings	16-14 #6, 8 & 10 Spade	16-14 .250 Male & Female	16-14 .250 Male & Female Fully Insulated	
YHSS10	YHSA 10K-6,8,10,516,14,38	YHSA 10K-.6F,8F,10F	YHSQ10M ,YHSQ10F25X03	YHSFQ10M /10F-25X03	
					
12-10 Butt	12-10 #6, 8, 10, 5/16, 1/4 & 3/8 Rings	12-10 #6, 8 & 10 Spade	12-10 .250 Male & Female	12-10 .250 Male & Female Fully Insulated	
YHSS8	YHSA 8K10	YHSA 8K38	YHSB14M 157, YHSB14F157	YHSS14R18, YHSS10R14	4 Crimp Nest
					
8 ga Butt	8 ga #10 Ring	8 ga 3/8 Ring	16-14 .157 Bullet Male & Female	Step-Down Butts 16-14 to 22-18 & 12-10 to 16- 14	22-18, 16-14, 12-10 & 8 AWG

Connectors are seamless or brazed seam. Multiple wall heat shrinkable polyolefin tubing. Color coded clearly marked.

- 1) Strip the wire 5/16"
- 2) Match connector to wire gauge & insert wire.
- 3) Properly seat wire and crimp with crimping tool nest that matches connector.
- 4) Apply heat evenly the entire length of tubing until tubing recovers & adhesive flows.



Made In The USA



REV: PE0200

NOTE:
1. SEE SHEET 4 FOR FURTHER DESCRIPTION OF KIT CONTENTS AND KIT QUANTITIES.

TO ORDER BURNDY PT

HEAT SHRINK CONNECTORS			
ITEM NO: N/A			
CAT. NO: SEE TABLE			
DRAWN BY: A MONTMINY	01/16/2009	BURNDY	
CHECKER: J MICHAUD	01/23/2009		
DSN APPVL: J MICHAUD	01/26/2009		
MFG APPVL: R CAVANAUGH	01/26/2009		
QA APPVL: J BRODEUR	01/26/2009		
MKT APPVL: --	01/26/2009		
PROD FAM: --		DRAWING NO	REV
PROJECT #: EPI3856	SIZE	10095060	E
DOCUMENT TYPE: Sales	B	SHEET 3 OF 4	
REL LEVEL: Released			

REV.	DATE	DESCRIPTION	ECO	BY	C'H'K.
E	09/02/2013 00:00:00 AM	CAT.# YHSA10K8 WAS ADDED IN TABLE FOR SHEET 1	32897	RG	BD

FURTHER DESCRIPTION OF KIT CONTENTS AND KIT QUANTITIES

YHSS18 22-18 BUTT QTY. 50	YHSA18K6-#6 STUD HOLE-QTY. 10 YHSA18K8-#8 STUD HOLE-QTY. 10 YHSA18K10-#10 STUD HOLE-QTY. 10 YHSA18K516-5/16 STUD HOLE-QTY. 10 YHSA18K14-1/4 STUD HOLE-QTY. 10 YHSA18K38-3/8 STUD HOLE-QTY. 10 22-18 RINGS	YHSA18K6F-#6 STUD HOLE-QTY. 10 YHSA18K8F-#8 STUD HOLE-QTY. 10 YHSA18K10F-#10 STUD HOLE-QTY. 10 22-18 SPADE	YHSQ18M25X03-.250 MALE-QTY. 25 YHSQ18F25X03-.250 FEMALE-QTY. 25 22-18	YHSFQ18M25X03-.250 MALE FULLY INSULATED-QTY. 10 YHSFQ18F25X03-.250 FEMALE FULLY INSULATED-QTY. 10 22-18	MR22-QTY. 1 HIGH QUALITY RATCHET CRIMP TOOL 4 CRIMP NEST 22-18, 16-14, 12-10, & 8 AWG
YHSS14 16-14 BUTT QTY. 50	YHSA14K6-#6 STUD HOLE-QTY. 10 YHSA14K8-#8 STUD HOLE-QTY. 10 YHSA14K10-#10 STUD HOLE-QTY. 10 YHSA14K516-5/16 STUD HOLE-QTY. 10 YHSA14K14-1/4 STUD HOLE-QTY. 10 YHSA14K38-3/8 STUD HOLE-QTY. 10 16-14 RINGS	YHSA14K6F-#6 STUD HOLE-QTY. 10 YHSA14K8F-#8 STUD HOLE-QTY. 10 YHSA14K10F-#10 STUD HOLE-QTY. 10 16-14 SPADE	YHSQ14M25X03-.250 MALE-QTY. 25 YHSQ14F25X03-.250 FEMALE-QTY. 25 16-14	YHSFQ14M25X03-.250 MALE FULLY INSULATED-QTY. 10 YHSFQ14F25X03-.250 FEMALE FULLY INSULATED-QTY. 10 16-14	
YHSS10 12-10 BUTT QTY. 30	YHSA10K6-#6 STUD HOLE-QTY. 10 YHSA10K8-#8 STUD HOLE-QTY. 10 YHSA10K10-#10 STUD HOLE-QTY. 10 YHSA10K516-5/16 STUD HOLE-QTY. 10 YHSA10K14-1/4 STUD HOLE-QTY. 10 YHSA10K38-3/8 STUD HOLE-QTY. 10 12-10 RINGS	YHSA10K6F-#6 STUD HOLE-QTY. 10 YHSA10K8F-#8 STUD HOLE-QTY. 10 YHSA10K10F-#10 STUD HOLE-QTY. 10 12-10 SPACE	YHSQ10M25X03-.250 MALE-QTY. 25 YHSQ10F25X03-.250 FEMALE-QTY. 25 12-10	YHSFQ10M25X03-.250 MALE FULLY INSULATED-QTY. 10 YHSFQ10F25X03-.250 FEMALE FULLY INSULATED-QTY. 10 12-10	
YHSS8 8 GA BUTT QTY. 15	YHSA8K10-#10 STUD HOLE-QTY. 15 8 GA RING	YHSA8K38-3/8 STUD HOLE-QTY. 15 8 GA RING	YHSB14M157-.157 BULLET MALE-QTY. 15 YHSB14F157-.157 BULLET FEMALE-QTY. 15	YHSS14R18-STEP DOWN BUTTS 16-14 TO 22-18-QTY. 10 YHSS10R14-STEP DOWN BUTTS 12-10 TO 16-14-QTY. 10	

REV: PE0200

TO ORDER BURNDY PT	HEAT SHRINK CONNECTORS			
	ITEM NO: N/A			
	CAT. NO: SEE TABLE			
	DRAWN BY: A MONTMINY	01/16/2009		
	CHECKER: J MICHAUD	01/23/2009		
	DSN APPVL: J MICHAUD	01/26/2009		
	MFG APPVL: R CAVANAUGH	01/26/2009		
	QA APPVL: J BRODEUR	01/26/2009		
MKT APPVL: --	01/26/2009	SCALE: 3:1		
PROD FAM: --		DRAWING NO	REV	
PROJECT #: EPI3856	SIZE	10095060	E	
DOCUMENT TYPE: Sales	B	SHEET 4 OF 4		
REL LEVEL: Released				

